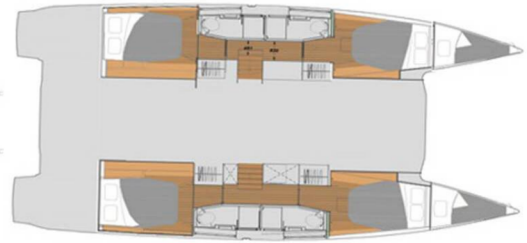


# FONTAINE PAJOT ELBA 45

Limin'\_X

The Catamaran Fontaine Pajot Elba 45 „Limin'\_X“, built in 2024, is moored in BVI, Tortola, Nanny Cay Marina, - British Virgin Islands. The yacht has 4 + 1 cabins, can accommodate 8 + 1 persons and has 4 + 1 toilets/showers.



## YACHT SPECIFICATIONS

Charter Base

**BVI, Tortola, Nanny Cay Marina, British Virgin Islands**

Yacht ID

**5906**

Brand

**Fontaine Pajot**

Name

**Limin'\_X**

Production Year

**2024**

Length

**13.45 m**

Cabins

**4 + 1**

Berths

**8 + 1**

Max. Passengers

**9**

Head/Shower

**4 + 1**

## STANDARD YACHT EQUIPMENT

Comfort

Cockpit cushions, Deck cushions, Outside cushions

Deck

Bimini top, Black ball, Boat hook, Cockpit fridge, Davit (Electric dingy davit winch), Deck brush, Dinghy with outboard engine (Highfield Ultra Light 340 Hypalon Charter Gris with YAMAHA engine 15 hp 2 stroke, short shaft), Electric anchor windlass, Fenders, Grill/Barbecue/Plancha (Round party size Magma grill), Jerry cans for fuel, Mooring ropes, Plastic bucket, Ropes, Spare anchor (Reserve, Auxiliary anchor), Swimming ladder, Teak cockpit (Synthetic teak floor transoms and cockpit), Water hose

Entertainment

Snorkeling equipment, Underwater lights (Underwater lighting 2x21W)

Galley

Blender, Coffee machine, Freezer (12v 90L), Kitchen utensils (Galley equipment, cutlery), Mug, Toaster

Interior

Curtains, Electric fans (12V fan (max. 6)), Electric toilet, LED lights, Toilet brush

Navigation

AIS, Autopilot, Binoculars, Compass, GPS (2\*GPS 8410), Parallel ruler, Radar, Radar reflector, Wind instrument/Anemometer, Windex

Safety

Buoyant smoke signal, Fire extinguisher, First aid kit, Flashlight, Fog horn, Gas detector, Horseshoe lifebuoy, Life jacket (children), Life jackets, Liferaft, Set of tools, Signaling mirror, Smoke detector, Torch, VHF radio (VHF US channels. Second VHF AIS helmstation US channels.)

Sails

Electric winch (For mainsail), Lazy jacks

Yacht electrics

Air Conditioning (Air cond. 110V 60HZ main syst. 56K BTU Quatuor (Req.OPT0625630)), Generator (11KW 110V/60HZ genset (Req. Version OCE/CFT)), Inverter (2000W Inverter/charger / 220V 50HZ or 110V 60HZ), Water heater (110V Water heater), Watermaker - desalinator (Watermaker 180L/h 60HZ (Req. OPT0625621 or OPT0625630))

## PRICE / WEEKS

25.04. - 05.05.2026

Booked

16.05. - 23.05.2026

Booked

24.05. - 31.05.2026

Booked

31.05. - 07.06.2026

Booked

09.06. - 17.06.2026

Booked

18.06. - 29.06.2026

Booked

02.07. - 10.07.2026

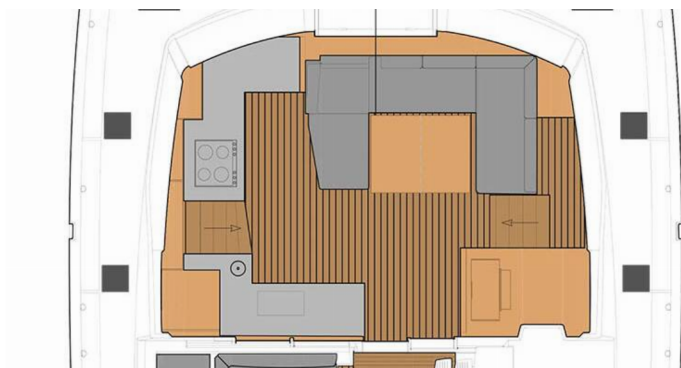
Booked

13.07. - 03.08.2026

Booked

04.08. - 09.10.2026

Booked



### WEB

[najachty.pl](http://najachty.pl)

### PHONE

+48 882 071 532

### E-MAIL

[biuro@najachty.pl](mailto:biuro@najachty.pl)

### NAJACHTY

ul. Pi. Świętej Małgorzaty 1-2/42B, 58-100, Świdnica, Poland



## PRICE / WEEKS

01.11. - 14.11.2026

Booked

14.11. - 26.11.2026

Booked

19.12. - 26.12.2026

On option



### WEB

[najachty.pl](http://najachty.pl)

### PHONE

+48 882 071 532

### E-MAIL

[biuro@najachty.pl](mailto:biuro@najachty.pl)

### NAJACHTY

ul. Pi. Świętej Małgorzaty 1-2/42B, 58-100, Świdnica, Poland

