

BAVARIA CRUISER 46

Zulu

The Sailing yacht Bavaria Cruiser 46 „Zulu“, built in 2015, is moored in Fethiye, Marina Imbat, - Turkey. The yacht has 4 cabins, can accomodate 8 persons and has 3 toilets/showers.



YACHT SPECIFICATIONS

Charter Base

Fethiye, Marina Imbat, Turkey

Yacht ID

3405

Brand

Bavaria Yachtbau

Name

Zulu

Production Year

2015

Length

14.27 m

Cabins

4

Berths

8

Max. Passengers

8

Head/Shower

3

STANDARD YACHT EQUIPMENT

Additional

Flag

Comfort

Blankets, Cockpit cushions, Pillows

Deck

Anchor with chain (80m. chain), Bathing platform (Electric), Bilge pump - Mechanic, Bimini top, Black ball, Boat hook, Bosun's chair (Safe seat) (boatswain's chair), Canister for water, Cockpit light, Cockpit table, Cockpit/stern, outside shower, Deck brush, Dinghy, Electric anchor windlass, Fenders, Fuel funnel, Gangway, Impeller, V-belt, oilfilter, Jerry cans for diesel (20lt.Full), Mooring ropes (2x15m. & 2x200m. & Shore Line 2x50m.), Plastic bucket, Repair box for dinghy, Reserve motor oil, Round/globular fender, Spare anchor (Reserve, Auxiliary anchor), Sponge, Swimming ladder, Teak cockpit, Water hose, Winch handles

Entertainment

Mask and snorkel, Radio CD player

Galley

Coffee capsules, Coffee machine, Dishwashing liquid, Gas bottles, Gas cookers, Hot water, Kitchen utensils (Galley equipment, cutlery), Oven, Pressurized water system, Refrigerator (12V), Sink

Interior

Barometer, Clock

Navigation

Binoculars, Bow thruster, Compass, GPS chart plotter, Hand bearing compass, Log, Navigation (Nautical) charts and nautical guide, Navigation set, Pilot book, Radar reflector, Wind instrument/Anemometer

Safety

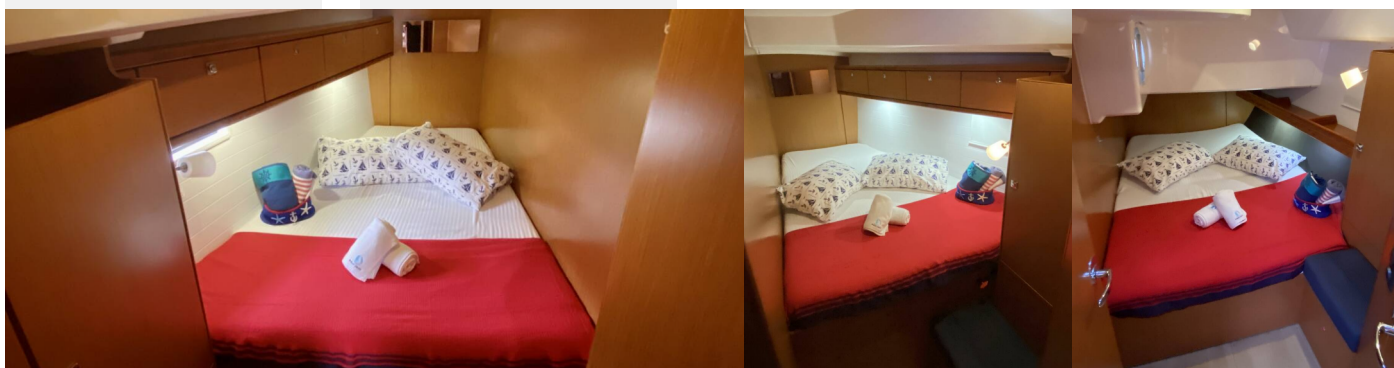
Black Water Tank, Distress signals, Emergency tiller, Fire blanket, Fire extinguisher, First aid kit, Fog horn, Life belts (Safety harness), Life buoy + Flashing light, Life jacket (children), Life jackets, Liferaft, Oars (Paddles), Repair kit, Set of tools, Sos Dan Buoy, Spare parts, Torch, VHF radio, Wire (shroud) cutter

Yacht electrics

220V socket, Air Conditioning, Batteries, Battery charger, Bilge pump - Electric, Heating (Webasto), Inverter, Plug 220V, 12 V, Service batteries, Shore connection 220 V, Solar panels, Start battery

PRICE / WEEKS

02.05. - 09.05.2026 Booked	09.05. - 16.05.2026 3.256 € 3.700 €	16.05. - 23.05.2026 3.256 € 3.700 €	23.05. - 30.05.2026 3.256 € 3.700 €
30.05. - 06.06.2026 3.256 € 3.700 €	06.06. - 13.06.2026 3.441 € 3.700 €	13.06. - 20.06.2026 3.441 € 3.700 €	20.06. - 27.06.2026 Booked
27.06. - 04.07.2026 3.441 € 3.700 €	04.07. - 11.07.2026 3.441 € 3.700 €	11.07. - 18.07.2026 3.441 € 3.700 €	18.07. - 25.07.2026 3.720 € 4.000 €
25.07. - 01.08.2026 3.720 € 4.000 €	01.08. - 15.08.2026 Booked	15.08. - 22.08.2026 3.720 € 4.000 €	22.08. - 29.08.2026 3.720 € 4.000 €
29.08. - 05.09.2026 3.720 € 4.000 €	05.09. - 12.09.2026 3.720 € 4.000 €	12.09. - 19.09.2026 Booked	19.09. - 26.09.2026 3.720 € 4.000 €
26.09. - 03.10.2026 3.720 € 4.000 €	03.10. - 10.10.2026 3.720 € 4.000 €	10.10. - 17.10.2026 3.720 € 4.000 €	17.10. - 24.10.2026 Booked
24.10. - 31.10.2026 2.697 € 2.900 €	31.10. - 07.11.2026 2.697 € 2.900 €	07.11. - 14.11.2026 2.697 € 2.900 €	14.11. - 21.11.2026 2.697 € 2.900 €



WEB

najachty.pl

PHONE

+48 882 071 532

E-MAIL

biuro@najachty.pl

NAJACHTY

ul. Pi. Świętej Małgorzaty 1-2/42B, 58-100, Świdnica, Poland



PRICE / WEEKS

05.12. - 12.12.2026

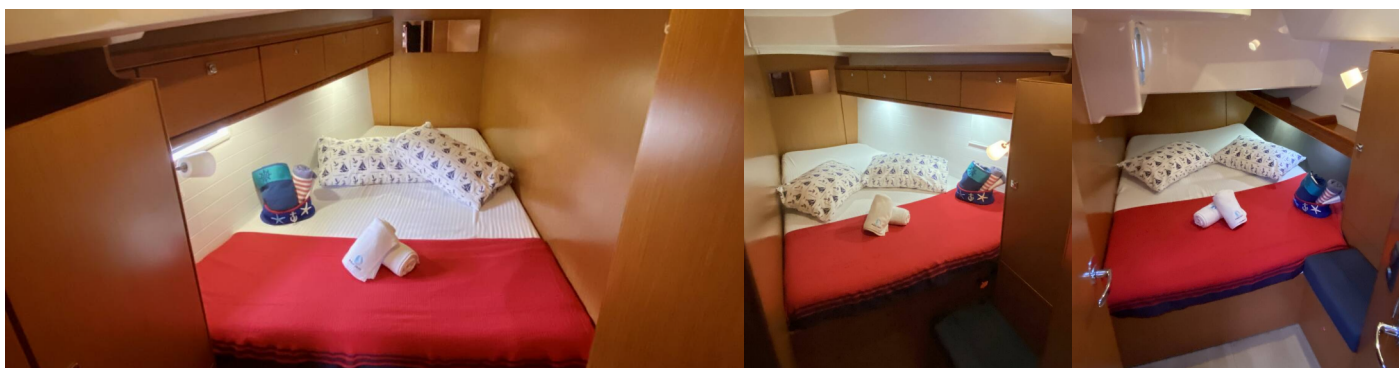
2.697 € ~~2.900 €~~

12.12. - 19.12.2026

2.697 € ~~2.900 €~~

19.12. - 26.12.2026

2.697 € ~~2.900 €~~



WEB

najachty.pl

PHONE

+48 882 071 532

E-MAIL

biuro@najachty.pl

NAJACHTY

ul. Pi. Świętej Małgorzaty 1-2/42B, 58-100, Świdnica, Poland

